

USDOT Resources

State DOT ADA Transition
Plans and Inventories Map



<https://maps.dot.gov/portal/apps/experiencebuilder/experience/?id=37404c22-4b09-4080-172dfa812716>

National Bikeway Network



<https://nbn.bike.gov/>

Complete Streets AI
Initiative



<https://its.dot.gov/CSAI/>

Collaborative Governance

for Bicycle, Pedestrian, and Accessibility Infrastructure Data



U.S. Department of Transportation
Office of the Secretary of Transportation

Bureau of Transportation Statistics

Cyrus Chimento, ORISE Fellow
Office of Spatial Analysis and Visualization
Bureau of Transportation Statistics
USDOT

There is a data gap.

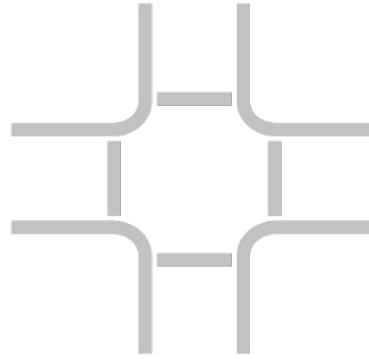
**No/Publicly Unavailable
Data or Restrictive
Licensing**



Polygon Data



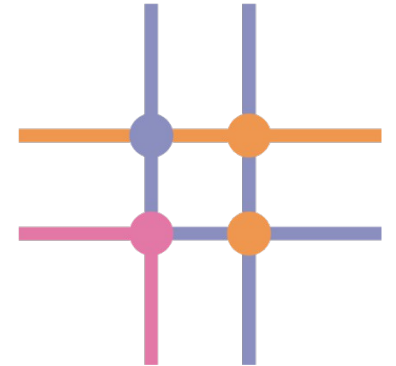
Line Data



Network Data



**Value-added
Network Data**



What is the impact?



Data Gap

Lack of data on bike, pedestrian, and accessibility infrastructure.

Barriers

Barriers to using, researching, prioritizing, and improving infrastructure and condition.

Low Mode Share

Few trips can be comfortably and safely made by walking, biking, or rolling.

Societal costs

Safety, public health, equity, climate, and economic costs.

What is BTS' goal?

- Include geospatial data layers
 - For the extent, connectivity, and condition of bicycle, pedestrian, and accessibility infrastructure
 - In the public right-of-way and in transportation terminals
- In the National Transportation Atlas Database (NTAD)



Photo by James Lewis on Unsplash

How will we achieve it?

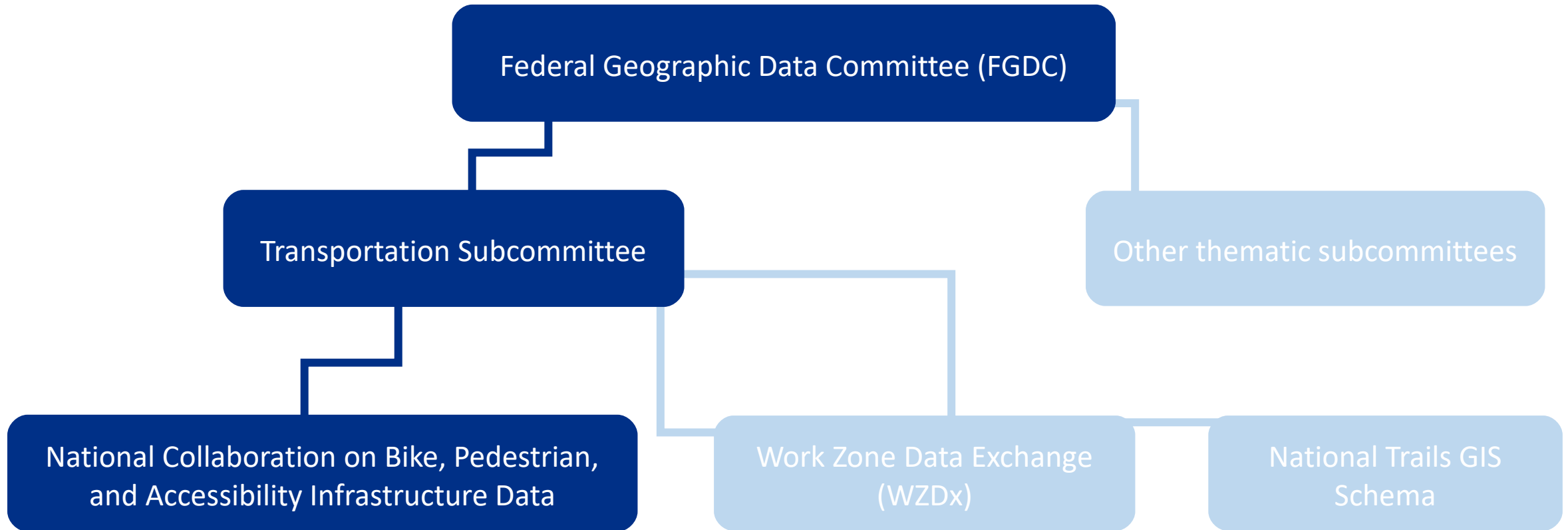
1. Discover what geospatial data is *already* available on bicycle, pedestrian, and accessibility infrastructure
2. Build access to *existing* data
3. Define requirements for the structure and minimum content of the data
4. Facilitate data collection with partners
5. Aggregate and publish data

Collaborative Governance

"The processes and structures of public policy decision-making and management that engage people across the boundaries of public agencies, levels of government, and/or the public, private, and civic spheres to carry out a public purpose that could not otherwise be accomplished."

Collaborative Governance Regimes (Emerson and Nabatchi, 2015)

National Collaboration on Bike, Pedestrian, and Accessibility Infrastructure Data



Draft Purpose

- ▶ The purpose of NC-BPAID is to advance a state of comprehensive, interoperable, and routable data on bike, pedestrian, and physical accessibility infrastructure that informs decision-making for individual travelers—as well as the government, private, nonprofit, and academic sectors—through the mechanism of open data standards.

Draft Scope



The scope of the NC-BPAID is limited to:

- Developing or endorsing open standards and practices that support the objective collection, exchange, portability, and refutability of high-quality data.
- Facilitating adoption of these standards and practices by data producers and consumers.
- Promoting the findability, accessibility, interoperability, and reusability of bicycle, pedestrian, and physical accessibility infrastructure datasets.



NC-BPAID—as an entity—will not collect or publish data.

Ultimately, the NC-BPAID should designate an independent and sustainable bicycle, pedestrian, and physical accessibility infrastructure data governance organization that will lead the work of maintaining and adapting the standards over time to reflect evolving real world conditions and soliciting representative involvement from the broad spectrum of stakeholders.

Participate in NC-BPAID

- Contact: cyrus.chimento.ctr@dot.gov
- Monthly meetings (typically last Thursday of the month, 3pm ET)
- Next meeting: TBD end of April
- Asynchronous peer exchange via GitHub discussions



<https://github.com/dotbts/BPA?tab=readme-ov-file#nation>

Discussion

Data Value Chain	Questions	Challenges
Data Creation	How did you create the data? In-house or contractor? Remote sensing or onsite? The whole network or some subset?	?
Data Harmonization	Did you create a spec or adopt an existing one? How does the spec you're using support your use case? Were you aggregating data from other providers? How did you license your data, or how were the data licensed to you?	?
Data Publishing	Are the data public? How can they be used (e.g., manual download, API)?	?
Data Interlinking	Do you commonly integrate this data with other enterprise or external datasets?	?
Data Exploitation	Do these data support decision-making? Are there ways the data are being used beyond the use cases you identified?	?
Data Curation	What does maintenance of these data look like?	?